

### Improved Performance

The modern broiler is more biologically efficient.

Per kg of live weight, it requires

**↓215g (0.5 lb)**

**less feed** and provides

**↑69g (0.15 lb)**

**extra total breast meat yield** while

increasing livability, health and welfare through balanced selection



### Lower Energy Use

Progress in live weight, shorter grow-out periods and reduced feed production and transport =

**↓16%**

**lower energy use**

**Reduced Global Warming Potential**

Improved FCR and shorter grow-out time =

**15% less**

**greenhouse gases produced**

### Water Usage

Improved FCR = Improved water intake

**↓1L (0.26 gal)**

**less water** required per 2.5 kg (5.5 lb) broiler

Better water intake =

- Better gut health
- Better litter quality
- Better footpad health
- More **efficient / sustainable** water use

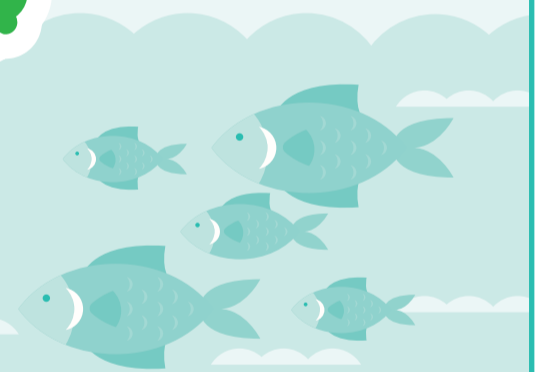


### Reduced Pollution Potential

Better FCR = Better nutrient utilization

**↓20% less**

**nitrate/phosphate excretion**



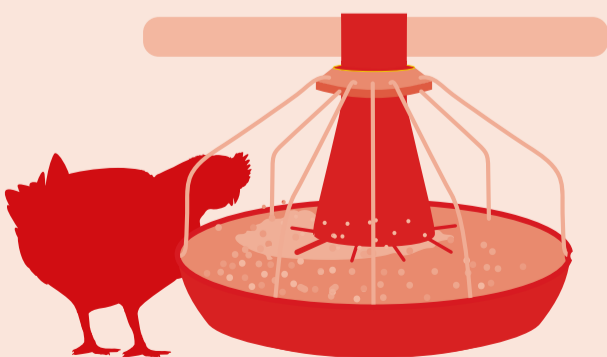
# Aviagen® Sustainable Broiler Production

When compared to **2003**, the **2018** broiler has...

### Reduced Land Use

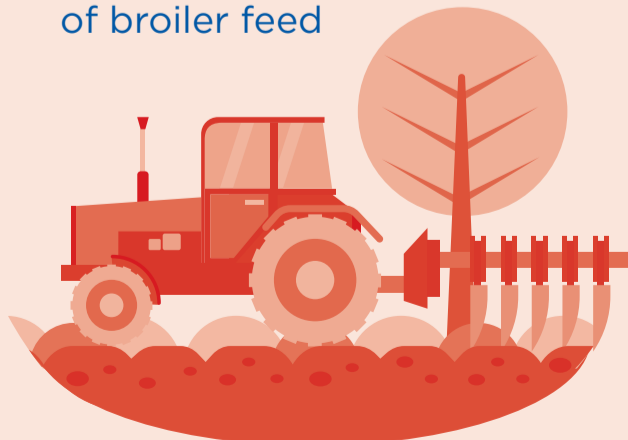
Improved livability and FCR = a 2.5 kg (5.5 lb) broiler consuming

**↓0.5 kg (1.1 lb) less feed**



**↓37% less**

**agricultural land** required for the production of broiler feed



**↓10% less**

**houses** for the same number of broilers

